



## INSIDE THIS ISSUE:

Comments from the Executive Director	2
Pastor Carl Selle retires from full-time ministry service	3
Lutheran Student Fellowship	4
Prayers and praises	6

IGNITE is the official publication of LCMS Campus Ministry, a Recognized Service Organization serving The Lutheran Church—Missouri Synod and dedicated to the campus mission field.

*LCMS Campus Ministry equips leaders to make disciples who make disciples on campus.*

LCMS Campus Ministry  
444 Abbot Road  
East Lansing, MI 48823  
Phone: 314.497.2400  
campusmission@yahoo.com  
Website:  
www.lcmscampusministry.org

## Underground: outreach looks like relationship

This March, student groups from Michigan Tech (Houghton, Mich.) and the University of Georgia (Athens, Ga.) joined LCMS Campus Ministry and the Acts 1:8 Mission Society to build up the Body of Christ through compassionate outreach at **Spring Break Underground 1**, Oxford Miss. and **Spring Break Underground 2**, San Antonio, Texas.

In our winter issue of Ignite we described how students at our January **Texas Underground** gathering in San Antonio left an indelible stamp on the struggling neighborhoods around the Mision Evangelica Luterana congregation, simply by seeking out children, families, and handicapped adults and inviting them into community—"widening our circle" by opening it up and letting others see what life in Jesus Christ looks like.

The stories from our "Ole Miss" **Underground** and our second San Antonio **Underground** sound much the same. **Underground** facilitator Pastor Randy Wilken recalls the story of Amanda in Oxford, Miss.:

"Everyone in our group saw how overwhelmed Amanda is—how her entire life had been dumped into this little two-bedroom house, strewn everywhere, left in boxes, on the couch, on the floor. Working all day; then feeding and clothing and caring for and cleaning up after one- and three-year-old boys: you get the picture. Well, ten young people rolled up their sleeves and got busy cleaning and organizing Amanda's house—the kitchen, the laundry, the boys' room, the bedroom.

Amanda was just beside herself; she said, 'No one has ever offered to do this—nobody!'

"Amanda joined us for Ash Wednesday worship and then stayed for our evening circle time. For the rest of the week, the whole week while we were there, she stayed with us every single night, till at least midnight. She had to be up at 5:30 in the morning, but she stayed with us every night, 'because,' she said, 'I just want more of what you guys have.'"

This is the **Underground** story: the Christian young adults who embark on an Underground adventure find themselves joining their hearts and hands with other broken people, and together



Amanda (holding 1-year-old Eliot), with some of the **Underground** gathering team and Michigan Tech Undergrounders.

they discover healing and hope in community—in a circle at whose center is a loving God. The Father Who made us and loves us; the Son Who lived with us and suffered with us and died for us; the Spirit Who renews us and impels us to act as the Body of Christ in the world.

Want to experience an **Underground** event for yourself? More are on the way; watch our website, our Leader Update e-letters, and posts on our Facebook (have you "liked" us yet?) and Twitter ("LCMSCampus"—follow us!) feeds.

*Content in this article has been adapted from Pastor Randy Wilken's blog and a recent interview of Pastor Randy on KFYO AM radio St. Louis. To read many more of Pastor Randy's observations on the Ole Miss Underground, visit <http://pastorrandywilken.wordpress.com>.*



**Widening the circle.** Pastor Randy leads Bible study during "circle time." Amanda (left, wearing red shirt) joined the circle every night. Others included members of the Oxford, Miss. congregation, and Trudy, whose touching story Pastor Randy tells on his blog.

# Comments from the Executive Director

by Jon Jensen

We wanted to update you on the trial run of the "College Money Matters" concept conducted over the Spring Semester on the St. Louis University Campus. In conjunction with Thrivent mentors, Pastor John Rathje and student mentor Andrew Berson, the personal (non-seminar format) methods for providing personal financial management education proved very valuable to the campus ministry and to a very interested campus community. Student Andrew Berson received part-time compensation for his part in the trial as well as valuable experience and education from his Thrivent mentors. His comments emphasize both the relationship building and ministry aspects of this unique concept:



Executive Director  
Jon Jensen

*I have been dedicated to leadership at Christ in the City LCMS/Crave coffee house, which functions as coffee shop, church and daycare. I have been particularly interested in the existing campus ministry called Acts 64 and in outreach as these areas have been a passion of mine for some time and Christ in the City is an excellent avenue for many ministries and community development initiatives. I have taken an incarnational approach to financial education in the coffee house for several reasons. I am restricted to some degree in working with SLU students at the request of the financial aid office on campus. They have requested that I function out of Crave because any other appearance, in classrooms or in SLU events, would affiliate our program with their office—and they are still a little unsure of our motives and our educational material. As such I have worked with students and community members who stop in at Crave during business hours.*

*My current model is simple: approach small groups of strangers, tell that I am a leader at Crave and we are interested in the health of our community and one avenue I am exploring is financial awareness/literacy. I present two fire-starter points with them and if they are curious I will talk more and get their contact information so that I can send them any links that might be helpful to them.*

*With today's population aged between 18-25, larger forum type gatherings can be very unappealing. It is difficult to get any students to add another function or event to their calendar. Students are much more likely to get involved in any activity if they have some sort of relationship established with anyone involved or with the presenter. Students are not excited by doom and gloom messages that worked well with previous generations. We are a groupon, dailydeal, and woot.com generation which is not scared into action but need to be excited into taking steps. The appeal I use is therefore of missed opportunity.*

*In order to get students interested in managing their debt, I present a diagram of a home mortgage or a car loan and the amount of extra interest they will pay with a poor credit score. Getting students involved in writing a budget is difficult as that is horribly boring and sounds a lot like classroom busywork. Therefore I get them to care about their debt management by pointing out an opportunity they could miss if they have a bad credit score in the amount of thousands of dollars of extra interest. We all want a leg up and this is a clear way to save tons of money in the future by taking steps now.*

*The approach for saving now is one of excitement over what could be and not a scare tactic of being stuck at age 50 with little retirement set up. Showing students opportunity for long term growth with little effort is immediately motivating for them to take steps to get things in order so that they will not miss the chance to have means to accomplish their goals.*

*The crossover from this topic to witnessing about Christ and His work is beautiful. The question asked by a Thrivent representative to me was: "What does 'rich' mean to you?" This type of question aims directly at the heart of a person and asks the ultimate question that leads to meaning of life, purpose while here on earth, and what matters. These financial questions are an excellent evangelistic tool, as students are pushed to think about their life holistically and where they are going. The real catalyst is 'why.' Why do they want to live, work and save money. Many younger people have a refreshing attitude as many have said they wish to give back to the communities around them. That being rich means having the means to help others. This is an open door through which we can walk in order to talk about Christ, or in the beginning of the relationship, to begin discussing what their beliefs are and where they find this philanthropic motivation.*

*We will be extending this concept, in conjunction with Thrivent, to several more campuses next Fall. Should you know of an interested campus ministry please let us know within the next several weeks.*

*From our **Word at Work** spring trial, instructor Jeremy Lotz writes:*

*Thanks so much for allowing me to teach the recent Word at Work online series on 'Active Listening and Crisis Resolution.' I had a blast! I had taught this course for years but hadn't ever done so in a 'virtual' classroom. I'll admit, as you know, I was initially very skeptical how this format could be interactive and especially how it could feel natural. Very soon into our classes, though, we all began visiting and addressing each other's real-life situations through the online chat feature. Then, as we later shared phone conversations, emails, text messages, and Facebook posts between classes, we grew together. When we prayed at the end of each class, I know we did so as friends. Omaha, St. Louis, Baltimore, British Columbia, and Kansas City have never been so near to each other! Praise God! I was thrilled to see*

Cont. page 3

## Comments from the Executive Director (Cont.)

*Lutheran Pastors, congregational leaders, and youth leaders become united in their enthusiasm to improve listening, communication, counseling, and therefore their ministries. The students were funny, interesting, and noticeably committed to improving how they showed Jesus to others through informed action and care. I was unforgettably blessed and can't wait to teach again in the fall! Many thanks.*

**Word at Work** Instructor Jeremy Lotz, MA, LPC, NCC, is a national speaker through Sunrise Seminars, LLC and practices Child & Family Therapy in Kansas City, MO. Jeremy's a proud 2002 alum of the University of Central Missouri's LCMS Lutheran Campus Ministry. Jeremy's available at: jeremy-lotz@sunriseseminars.com.

Working with campus leaders and instructors from around the country, we have some very interesting possibilities for Fall 2011. We would like to see more ideas from the international student perspective. Give us a call to discuss! We will have our Fall curriculum lineup for you in a Leader Update later in the month.

Blessings on your work!

Jon

## Selle retires from full-time ministry service

On May 1, family and friends gathered at Peace Lutheran Campus Center in Stevens Point, Wisc. to celebrate Pastor Carl Selle's 42 years of pastoral ministry and wish him well in his retirement from full-time service. Selle will transition to a new role in which he will continue to serve with International Student Ministry, Inc. on the national level and travel around the North Wisconsin LCMS District encouraging support of campus ministries for American and international students.

"Carl has been an excellent mentor for many international student ministry workers, including myself," says Marcia Mittwede, president of International Student Ministry, Inc. "His encouragement to not be a 'lone ranger' worker but to involve other people in our churches to reflect Jesus among international students has been a key principle that has served to expand the Kingdom and bless dozens of Lutheran Christians in over 80 campuses around the country."

We give God thanks and praise for the faithful service of Pastor Carl Selle and for his long-time partnership with LCMS Campus Ministry. We also offer our congratulations upon learning that Carl has been conferred an honorary doctorate by Concordia Seminary, St. Louis! Well done, Dr. Carl!

LCMS Campus Ministry's  
**STUDENT  
CONNECT**

Get your college-bound student connected  
to a campus ministry.

[lcmscampusministry.org](http://lcmscampusministry.org)  
Follow the links to StudentConnect



Pastor Carl Selle, on Peace Campus Center 2011 mission trip to China.

Finally, we look forward to continuing to cross paths with Pastor Carl Selle as we work together to build up the body of Christ and spread the Gospel on college and university campuses.

We want to be in *your* social network. "Like" us on Facebook! Follow us on Twitter! "Friend" us on YouTube! (We're on Flickr too!)



LCMS Campus  
Ministry



LCMSCampus



LCMSCampusMinistry



# Lutheran Student Fellowship

A student-led fellowship of Christian college students and a ministry partner of LCMS Campus Ministry

## As you ride out change, remember Who's in the boat with you

By Rev. Jay Winters

Change is good. About four years ago, my life changed when I became the Pastoral Advisor for Lutheran Student Fellowship. In about a month, my life is going to change once again as my term as Pastoral Advisor ends and LSF gets a new Pastoral Advisor.

That naturally makes me look back at the past four years and consider them. Over the past four years, I've seen changes in the ways that campus ministry is organized and done in the Lutheran Church—Missouri Synod. I've seen new chapters crop up, and others die out. I've seen LCMA turn into LCMS Campus Ministry. I've seen Confabulations and I've seen Underground events. I've seen a variety of student leaders from throughout our campuses, and I've seen them change through the work of the Holy Spirit. I've seen change in myself and I've seen change in LSF.

Any campus minister will tell you: If you can't deal with change, you probably shouldn't be doing this gig. You have to be ready to see change in students, you have to be ready to see change in culture, you have to be ready to see those familiar to you graduate and move away to a different town—both figuratively and literally. Only a few things remain constant, and only one thing is guaranteed forever—the rallying cry of the Lutheran reformers—*Verbum Dei Manet In Aeternum*, the Word of God Exists Eternally.

One of my favorite passages about change is recorded at the end of Mark 4. Everything is going along smoothly for the disciples. Sailing isn't really a "change" for most of them; it's what they were used to doing before they started following this Jesus guy. But then change comes upon them in the form of a storm, and the disciples get spooked. "Don't you care about us!?" they exclaim to Jesus, who has been asleep in the back of the boat.

Yeah, that's familiar. How many times did I cry out to God, "don't you care about LSF?!?!" in the midst of the storms we encountered: lost chapters, bad decisions, fair-weather friends, and hazy vision.

Then Jesus stood up in our boat, calmed the seas, and rebuked our lack of faith. He changed us in the midst of the storm and changed us again as He calmed it down. He

showed us who we were in the storm and He showed us who He is when He calmed it.

As I step off the boat of LSF onto dry ground, I envision it sailing again across those waters. There will be more change. There HAS TO BE more change or LSF will die. This boat is made to sail through troubled waters with her Savior leading the way. We are a people who live and lead, unafraid of our crosses to bear. We are a people who live and lead, unafraid of change and changing.

We recognize that change IS good, because it is in change that we see Christ's permanence. Continue to change, LSF, I'll be praying for you by the shore... and Jesus is with you in the boat.



*Jay Winters is pastor at University Lutheran Church, Tallahassee, Florida, the campus ministry serving Florida State University, Florida A&M, and Tallahassee Community College; he has also been National Pastoral Advisor for Lutheran Student Fellowship since 2008. You can find Jay on Facebook and follow him on Twitter.*

## Thanks to Pastor Jay!

Rev. Jay Winters' term as National Pastoral Advisor to Lutheran Student Fellowship comes to an end this year! The process to select a new LSF National Pastoral Advisor is underway and will be completed soon; we hope to welcome LSF's new pastoral advisor in the summer issue of *Ignite*.

We thank Pastor Jay for his faithful service and partnership. Jay will be staying on the LCMS Campus Ministry Board in the role of secretary, so we are looking forward to continuing to work with him as we serve campus ministries together.

We invite you to join us in praying for God's blessing on the selection process. Please pray also for the leader God has chosen for this important role—he has some big shades to fill.



# Lauren's story: the difference a campus ministry can make

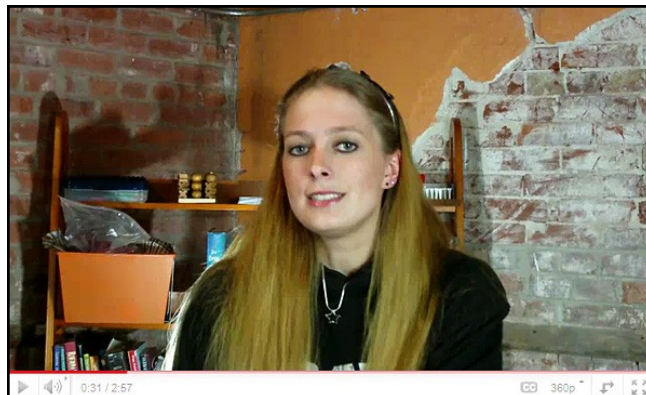
Growing up in a Lutheran church, I was very involved in my church's youth group—which was easy to do (and not easy to get out of) because of the influence of my parents. When I transitioned from high school to college, a lot changed: my friends, my responsibilities, my priorities, my living situation. Even I changed.

I had thought that all I needed was a good foundation from my early years in church to get from middle school to high school to college to adulthood. What I learned was that I needed to maintain that foundation to progress through life. I discovered that if I wanted to stay close to the Lord, I must get involved with my local church's campus ministry.

College would have been a lot harder without the constant love, encouragement, laughter, and joy that I found in the campus ministry I attended. When I first became involved in my local campus church, I hoped it would bless me with encouragement, friends, purpose, and fun times. What I discovered was that it was also strengthening my faith and allowing me to learn more about my Lord and Savior and to grow closer to Him.

My advice to any Christian on his or her way to college: don't think that your faith from high school will be strong enough to get you through college if it remains un-nurtured and un-nourished. So many things will demand your attention; but if you surround yourself with people who also want to grow closer to Jesus, they'll be there beside you to support you and pray for you when you're at your weakest. My involvement in campus ministry has helped grow the faith and strength with which I have been able to face the challenges of graduating, starting a new job, and adjusting to my new stage in life.

It takes a conscious effort and a desire to go deeper in your faith. Your campus ministry may reach out to you, but it



Lauren Lobosky is a 2010 aerospace engineering graduate of St. Louis University and an alumna of Crave Lutheran Campus Ministry in St. Louis. Watch and listen to Lauren's testimony on our YouTube channel, [youtube.com/lcmscampusministry](http://youtube.com/lcmscampusministry). What's your story? Post a video of your testimony on YouTube and then tell us about it; we'd love to add it to our channel's "Favorites." *Or if you're in the St. Louis area, we'll shoot, edit and post your testimony! Get started now by emailing us at [campus-mission@yahoo.com](mailto:campus-mission@yahoo.com).*

will not come to you, and no one is going to drag you to it. Don't put it off as something you will attend "next week"—just go! Give it a chance; allow it to give you that little bit of hope and encouragement that you may not even think you need! Listen to the call of the Holy Spirit, and determine in your soul that you will not let the fire of your faith dwindle away! Then watch what happens.

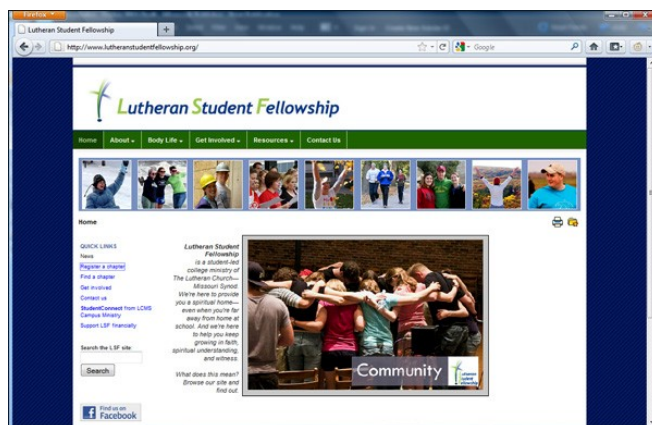
*Thanks to Lauren for this testimony. Visit [youtube.com/lcmscampusministry](http://youtube.com/lcmscampusministry) to watch and listen to her message online.*

## LSF's new website

For some months Lutheran Student Fellowship has been busy building a new website. We're pleased to say Phase I is complete and the new website is ready for service! Improvements include greater connectivity to resources and activities at the LCMS Campus Ministry website (including the StudentConnect referral tool and Word at Work online education), updated chapter finder, and expanded involvement opportunities, especially through LCMS Campus Ministry.

Phase 2 will include population of information on the Regional Reps/Officers page as it becomes available, as well as news and media.

Be sure to visit soon: <http://lutheranstudentfellowship.org>.



Visit the new [lutheranstudentfellowship.org](http://lutheranstudentfellowship.org) today!



Have you renewed your LSF Chapter for 2011-12? You still can! And it's painless. Visit [lutheranstudentfellowship.org](http://lutheranstudentfellowship.org) to get started!

LCMS CAMPUS MINISTRY  
444 Abbot Road  
East Lansing, MI 48823



To support LCMS Campus Ministry with a tax-deductible financial gift, send a check, payable to Lutheran Campus Mission Association, to:

**Lutheran Campus Mission Association**

Rev. Richard Boring, Treasurer

152 South Columbia Ave.

P.O. Box 407

Seward, NE 68434-0407

Please include your name, mailing address, e-mail address, and phone number. You may also contribute via a secure online connection at

[www.lcmscampusministry.org](http://www.lcmscampusministry.org).



You can also support us by visiting [www.goodsearch.com](http://www.goodsearch.com) and selecting **Lutheran Campus Mission Association** as the charity of your choice!

## Prayers and Praises

- Give God thanks for the service and ministry of Rev. Jay Winters, outgoing national pastoral advisor of **Lutheran Student Fellowship**. Ask God to bless Jay in his continuing ministry.
- Praise God for the faithful service of ISM, Inc.'s Pastor Carl Selle and God's blessings to him over 42 years of ministry. Pray that God will bless Carl in his (semi-) retirement and continuing ministry.
- Praise God for the service of outgoing national **Lutheran Student Fellowship** president Greg McDuffie from Texas A & M University. Ask God to bless the process of electing new LSF leaders.
- Give God thanks for blessing St. Paul Lutheran University Chapel at Iowa State University with a Eutyclus Gathering Grant for outreach.
- Ask God to continue to bless the planning and presentation of LCMS Campus Ministry's **Underground** servant gatherings.
- Please join with us in asking God to bless LCMS Campus Ministry's planning of activities, services, and events for the coming academic year. Join us also in praying for adequate funding according to God's will.